



Jazzlive at The Crypt - Venue Access Information

Download a PDF of this access document here <https://www.jazzlive.co.uk/assets/img/JLVAIversion5.pdf>

1. Introduction	p2
2. Contact Details	p2
3. Venue Description	p2
4. Bookable Access Facilities + How To Apply (if applicable)	p3
5. Travel Guide	p3
6. Arrival Guide	p4
7. Toilets	p4
8. Customers with Medical Requirements	p4
9. Access to Performance	p5
10. Assistance Dogs	p5
11. Strobe Lighting	p5
12. Other Info	p5

1. Introduction

Jazzlive at The Crypt is run by a small team of volunteers who seek to make the venue as accessible and inclusive as possible. We are a friendly and welcoming bunch of people and would urge you to get in touch to discuss if you're considering a visit and have particular access needs.

We are, however, in the crypt of a church that was built in the 1840s, long before accessibility was a consideration for buildings, and the church's plans for installing a lift are still a long way in the future.

We will soon be live streaming our concerts online which we hope will enable more people to access them more easily. See our website for details and sign up to our mailing list for regular news.

2. Contact Details

Please do contact us with any questions or to discuss your access needs:

Mary Devlin, director.

Email: nice@jazzlive.co.uk

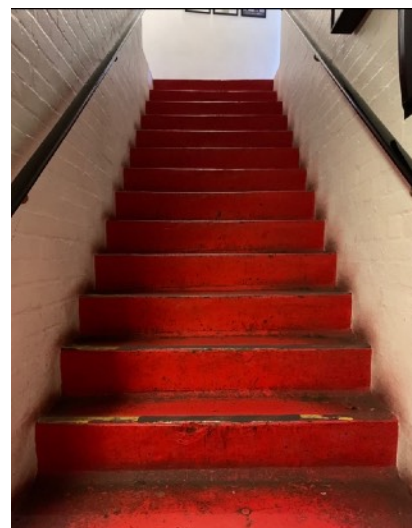
You can expect a response within 5 working days, usually sooner.

3. Venue Description

The venue is accessed by 3 steps up into the church entrance with a handrail (rope) on the right hand side, and then 13 steep steps down into the Crypt, with a solid handrail on both sides, followed by 1 shallower step 1 metre along a corridor. Once inside, everything is on the same level, although the floor slopes very gently in places. To access the outdoor (smoking area) there are a further 16 steep steps at the rear of the building back up to ground level.

Fire exits are the same as the entrance or via the outside area at the back.

Unfortunately, there are no step-free options for accessing the venue.



Entrance to church and staircase down into Crypt.



Fire exit / back door to smoking area, view from inside and outside.

4. Bookable Access Facilities + How To Apply (if applicable)

If you are planning to bring a companion/personal assistant, please let us know by emailing nice@jazzlive.co.uk

Wherever possible, we will reserve seating with a direct sight of the stage for Deaf and disabled customers.

There are no accessible toilets in the venue but there is one in the pub opposite, 150 metres away, and a public accessible toilet on Camberwell Green, which is 0.3 miles away - see below for details.

Wherever possible, we will reserve the nearest parking bay to the church entrance for customers with an impairment who would find this of use, upon request.

To apply for any of the above considerations, please contact Mary Devlin, nice@jazzlive.co.uk

5. Travel Guide

Limited parking is available for those with access needs in front of the church, please contact Mary for reservations. Other parking available on nearby side streets. Wilson Road is the nearest, which runs up the side of the Church, max 320 metres.

- Taxis or other vehicles can drop off directly in front of the entrance.

- Buses: 12, 36, 171, 345, 436, N89, N136 and N171 stop approximately 110 (towards Oval) and 175 metres (towards Peckham) from our door.
- Buses serving Camberwell Green - 0.3 miles away: 35, 40, 42, 45, 68, 176, 185, 468, N68, N171
- Elephant & Castle overground/underground is 1.9 miles away, and Oval underground is 1.3 miles.
- Overground serves nearby Denmark Hill - 0.5 miles away.

6. Arrival Guide

Please see event info for venue opening times, concerts usually start later than the venue opening time, these may vary so please contact Mary if you need to know about a specific event.

If you need to avoid crowds or have access needs, please contact Mary to discuss your arrival time. We can discuss your particular needs, and if required, arrange for early entrance.

If you need advice before entering the venue, ask the Security Officer at the front door to radio for Mary or the venue manager to come and welcome you. On entering the Crypt, ask at the bar for Mary or the manager in order to be directed to reserved seating or for other kinds of support.

If you have booked online, you only need to provide your name at the door, you do not need to print your ticket or have the reservation number to hand.

7. Toilets

Our toilets are unfortunately not particularly accessible. We have two separate toilets with own wash basins for women. The men's toilets have three urinals, two handbasins and two cubicles.

None are wheelchair accessible.

The toilets are situated beyond the bar and kitchen, about 30 metres from the main stage and seating area.

There is an accessible toilet in The Camberwell Arms, a pub over the road from The Crypt to the left towards Camberwell Green, approximately 150 metres away. We have permission for our customers to use their toilet. They are open until 11pm.

There is also a 24 hour public accessible toilet on Camberwell Green, which is 0.3 miles away.

8. Customers with Medical Requirements

We welcome customers who need to bring medical equipment, medicines, particular food or drink into the venue to manage a medical condition, however, because we sell food and drink, we generally discourage most customers from bringing their own, so it is best to contact us in advance to avoid having to explain yourself to staff.

In a medical emergency, please approach the nearest staff member who will contact our on-site first aider and seek emergency help for you.

Please do contact Mary if you have any other concerns.

9. Access to Performance

We don't offer any additional access services at the present time.

10. Assistance Dogs

We welcome assistance dogs in the venue if they are registered with an organisation that is a member of Assistance Dogs UK or have undertaken a recognised assistance dog training course. Please inform us in advance if you plan to come with a dog and we will reserve the most appropriate seating for you.

11. Strobe Lighting

We don't use strobe lighting at our jazz concerts but may do at other events. If this could be a problem for you, please check with us.

12. Other Info

We strongly encourage you to get in touch before visiting if you do have any access needs to ensure that your visit is as enjoyable as possible.

There are limited numbers of tables and chairs in the venue, and some backless stools. Usually, it is "first come, first seated" so if you need to be sure you can sit down, you must contact us to reserve priority seating.

We would welcome feedback about your experience of our venue and its accessibility, you can contact us via the "contact us" page on our [website](#) or by emailing Mary directly:

nice@jazzlive.co.uk